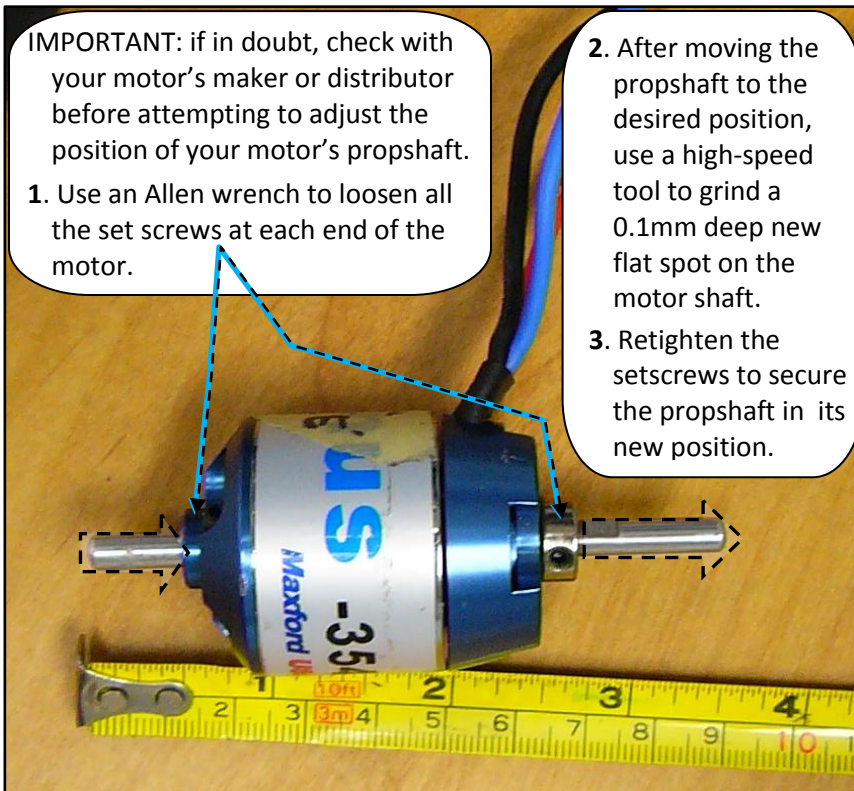


## DH.2 ADDENDUM/ASSEMBLY NOTES

1. **PAGE 10 ITEM C:** The customer is free to choose whether to mount the motor at the front or the back side of the 'firewall' (i.e., the motor-mounting surface of the motor mounting box).

If you decide to mount the motor inside the motor-mounting box, it may be necessary to slightly adjust the position of the motor's output shaft to ensure the propeller has adequate clearance behind the dummy engine, as shown below.

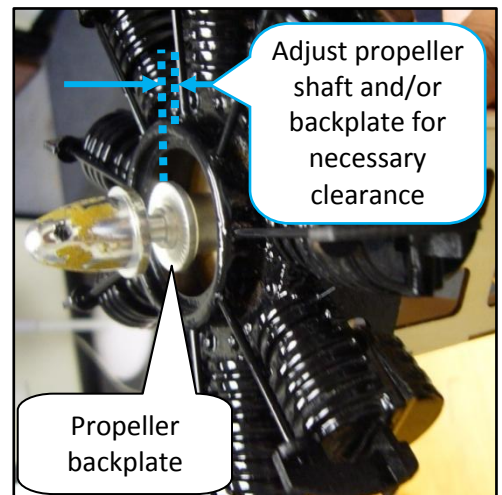
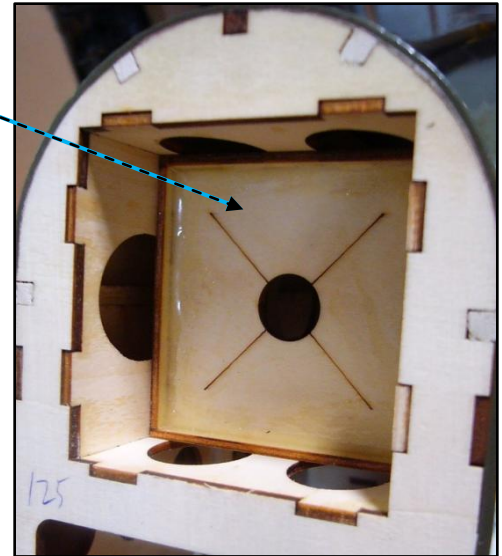


**IMPORTANT:** if in doubt, check with your motor's maker or distributor before attempting to adjust the position of your motor's propshaft.

1. Use an Allen wrench to loosen all the set screws at each end of the motor.

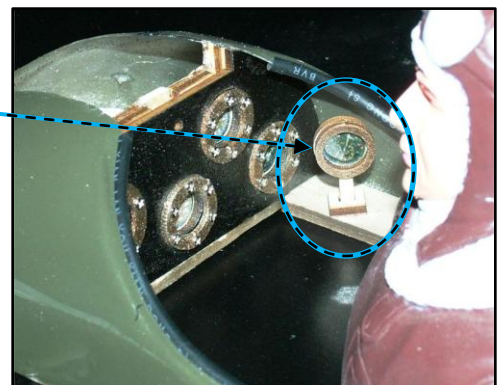
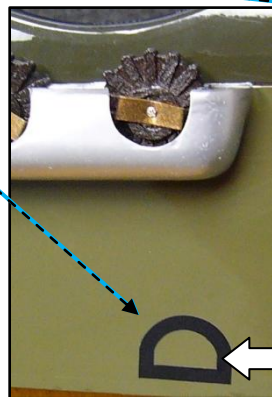
2. After moving the propshaft to the desired position, use a high-speed tool to grind a 0.1mm deep new flat spot on the motor shaft.

3. Retighten the setscrews to secure the propshaft in its new position.



2. **PAGE 16 ITEM E:** Additional optional stand-alone instrument: Test fit then use epoxy to attach the simulated stand-alone instrument in its precut rectangular opening at the pilot's right-hand side.

3. **PAGE 16 ITEM E-4:** Peel and position the simulated openings for the pilot's foot-steps as shown below (left-side of fuselage is shown).



### REMINDER:

**THIS PRODUCT IS NOT A TOY.  
PLEASE ENJOY YOUR HOBBY  
AND FLY SAFELY!**

If you have a question or problem while assembling your Maxford USA Airco DH.2

you may call us at (562) 529-3988 during our office hours, Monday through Friday, 9 AM to 5 PM Pacific time.

Happy Landings!